



SECRET LASHES<sup>®</sup>  
CATALOGUE



SECRET LASHES<sup>®</sup>

---

Secret Lashes is a leader in the eyelash extensions industry in Poland for over decade. The company manufactures the highest quality eyelash and brow styling products and distributes to EU countries and the USA. The quality of our products has gained fame and recognition among customers all over the world. Distributions in Poland and Europe provide wholesale and specialized points of sale, so that our products are available in any place in Europe.

„I often say that eyes are „Hypnotizing“, hence the name of the new line of Secret Lashes eyelashes. Hypnotizing is a natural effect of styling that I and a lot of women care about the most. Let's not forget that it's the lashes that make our look captivating and hypnotizing.”

I recommend, Joanna Krupa

*połecam*  
*Joanna Krupa*



# CONTENTS:

---

1. Eyelashes
2. Glues
3. Tweezers
4. Accesories
5. Make up
6. Lash lifting







# HYPNOTIZING

*by Joanna Krupa*

## NEW MATT

Matted version of our eminent line -  
Hypnotizing by Joanna Krupa

Matted finish, more densely packed, depth  
of color and silver tape - it all allows for the  
application which emphasizes the most  
attractive gaze.

- Curl: C
- Thickness: 0,07 mm
- Particular lengths:  
6-14 mm 12 stripes per tray
- Silver Tape



# DISCOVER

*new curl*



LC



L



## *New Collection - L and LC curls*

Modern curl inspired by worldwide trends!

Our L/LC line allows to elevate the application to the higher level.  
They allow for obtaining the effect of a real make-up eyeliner.

- MIX lashes (7-14mm in length)
- Silver tape - take off and put back in the stripe without any surface discoloration
- Deep black

# Essential Eyelashes +14 stripes!







## Speedy Eyelashes „...be up to speed“

- Double woven, black eyelashes on a strap with a minimum amount of glue at the root, ideal for volumetric method.
- The formation of the tufts is easier and faster, and the fan created remains unfolded.
- Easy to walk away from the stripe, which reduces the application time of large volumes
- Profile: C
- Thickness: 0,05mm; 0,07mm
- Available single lengths: 8mm-14mm
- Package: case, 12 stripes

## Essential Eyelashes by Joanna Krupa

- A new line of eyelashes, whose ambassador is Joanna Krupa.
- Densely woven, delicate and soft eyelashes in deep black color.
- "Siltvertape" technology - eyelash stripes that can be peeled off and glued off several times without dirtying the surface
- Profile: C, CC, D, DD
- Thicknesses: 0,07mm
- Available single lengths: profile C 7mm-14mm
- Package: case, 14 stripes
- MIX versions:
- Curl C and CC:  
7mm/8mm/2x9mm/2x10mm/2x11mm/2x12mm/13mm/14mm
- Mix versions:
- Curl D and DD: 8mm/2x9mm/2x11mm/2x12mm/13mm/14mm/15mm

# NEW MODERN

Our unique line "Modern" with M curl allows for making original and delicate application. They are distinguishable by the lightness of the curl and a deep black color.



M - curl



Tray includes:

- 14 stripes
- Curl: M
- Thickness: 0,07 mm
- Length (MIX): 7 - 14 mm



- Classic shape of eyelash
- Deep black
- Profile: B,C, D
- Thicknesses:  
0,05 mm/ 0,07 mm/ 0,10 mm/ 0,15 mm/ 0,20 mm
- Single size:  
lines 8mm-14mm/ 6-lines 6mm,7mm,15mm
- 0.09 - ideal for method from 2D to 5D
- 0,10 for method 2D and for a gentle 1:1 styling style
- 0,15 and 0,25 - for method 1:1
- MIX
- Curl B:  
7mm/8mm/2x9mm/3x10mm/2x11mm/2x12mm/13mm
- Curl C:  
7mm/8mm/2x9mm/2x10mm/3x11mm/2x12mm/13mm
- Curl D:  
8mm/9mm/2x10mm/3x11mm/3x12mm/13mm/14mm



- The highest quality
- Color and structure similar to natural eyelashes
- Narrow tape with glue layer for fluffy fans
- Durable, delicate, easy to care for
- Signed by brand ambassador Joanna Krupa
- 12 stripes in case
- Hypnotizing line includes eyelashes for methods of eyelash extension
- Profile: B, C, D

- Thickness: 0,03/ 0,05/ 0,07/ 0,10/ 0,15/ 0,20
- Lengths: B 7-14mm/ C 7- 15mm/ D 8-15mm
- Lengths in mixed case: B 7-14mm/ C 7-14mm/ D 8-14mm

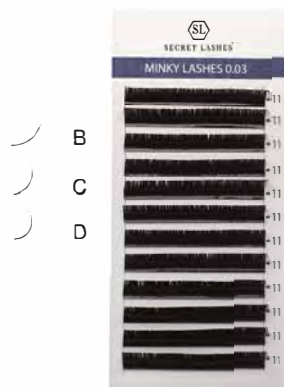
hypnotizing by  
Joanna Krupa





*„HORIZON BROWN“*  
 - a novelty from Secret Lashes

- Chocolate equivalent of the Essential line by Joanna Krupa.
- Densely woven, delicate and soft lashes in two shades of brown, inspire to combine colors and create a delicate transition from light brown to dark (ombre)
- Eyelashes with a thickness of 0.07mm placed on a silver strip of glue with a width of 2mm
- Colors: Dark brown, Brown
- Profile: C,D
- Thickness: 0,07mm
- MIX versions:
- Curl D: 8mm/2x9mm/3x10mm/3x11mm/2x12mm/2x13mm/14mm

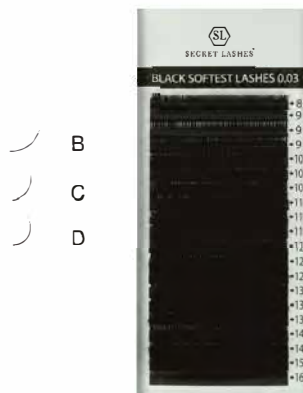


## Mink Eyelashes 0,03 mm

▽ nō ñà Ǿ  
 ▽ y È ñō à Ǿ Ò è  
 à à à È ñà à ò  
 & &  
 ▽ Nō ñ Ùà Ǿ à ò Ò à È à  
 ñà à ò ñ  
 Ò Ùà ò ì È È È ñà

▽ g Ǿ à Ž ž &  
 ▽ vñ Ǿ à  
 ▽ Nà ì ñ  
 ▽ Nà ì ñ ò ò à Ù È

▽ ž Ò È Ò ñ ò  
 ▽ g È Ò È à È ò à

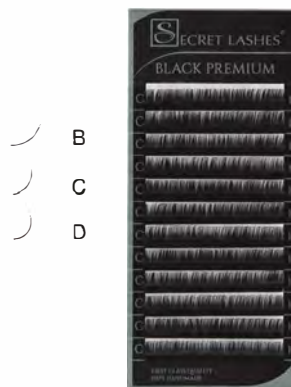


## Softest Eyelashes 0,03 mm

▽ nō ñà Ǿ  
 ▽ y È ñō à Ǿ Ò è à  
 à à È ñà à ò & &  
 ▽ Nō ñ Ùà Ǿ à  
 = Ò à È à ñà à ò ñ  
 Ò Ùà ò ì È È È ñà

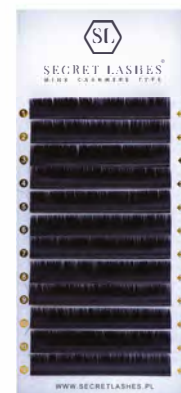
▽ g Ǿ à Ž ž &  
 ▽ vñ Ǿ à  
 ▽ ž Ùà à Ò È Ò ñ ò  
 ▽ Nà ì ñ  
 ▽ Nà ì ñ ò ò à Ù È  
 Ž ž  
 &

▽ g È Ò È à È ò à Ù ò à  
 ò à Ù È ò à ò à Ù È



## Black Premium Eyelashes

- Silk-synthetic
- Ultra-thin, perfect for volume eyelash extension 2D-8D
- Profile: B, C, D
- Thickness: 0,03mm (single sized and mixed tray) and 0,05mm (only in mix)
- lengths: 7-16mm
- Lengths in mixed tray: B 7-13mm / C 8-15mm / D 9-14mm
- Color: black, semi-matt
- Package: tray, 12 lines



## Cashmere Eyelashes

- Silk-synthetic with cashmere fibers
- Perfect for volume eyelash extension
- Exclusive, soft, light, shiny
- Profile: B, C, D
- Thickness: 0,04 / 0,07 mm
- Lengths: 7-15 mm
- Lengths in mixed tray:
- 4mm-8mm and 8-15mm
- Color: black (0,04 and 0,07mm), brown(0,07mm)



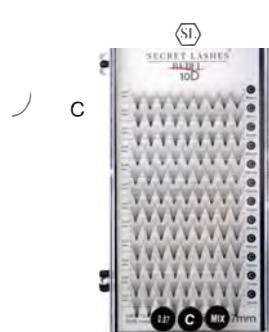
## Kim Camellia Eyelashes

- Silk-synthetic
- Graded eyelashes, 3 mixed lengths on one line
- Lengths are graded every 2 mm
- Designed for stylists with experience in volume eyelash extension
- Odd lengths
- Profile: B, C, D
- Thickness: 0,05 / 0,07 mm
- Lengths in mixed tray: 7-9-11/9-11-13/11-13-15 mm
- Color: black
- Package: tray, 12 lines



## Kim Camellia Twin Eyelashes

- Silk-synthetic
- Graded eyelashes, 3 mixed lengths on one line
- Lengths are graded every 2 mm
- Designed for stylists with experience in volume eyelash extension
- Profile: B, C, D
- Thickness: 0,05 / 0,07 mm
- Lengths in mixed tray: 6-8/6-8-10/8-10-12/10-12-14
- Color: black
- Package: tray, 12 lines

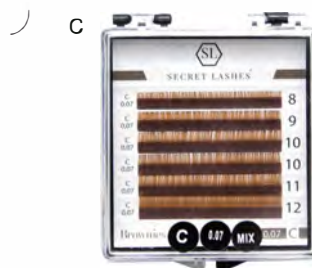


## Rebel Eyelashes

- Premade volume fans
- To choose from: 2D, 3D, 4D, 5D, 6D, 8D, 10D
- Package: tray, 12 lines
- Single sizes: from 8mm to 13mm
- Profile: C
- Thickness: 0.07mm
- Mix 8mm-13mm (8mm, 2x9mm, 3x10mm, 3x11mm, 2x12mm, 13mm)

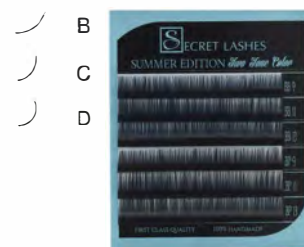






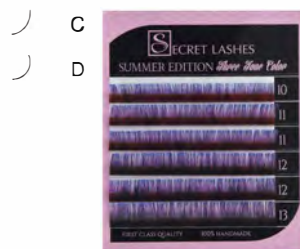
### Brownies Eyelashes

- 6 strips of one length in the package (choice from 7mm to 14mm)
- Thickness: 0,07mm
- Profile: C
- Available in dark brown, light brown and brown



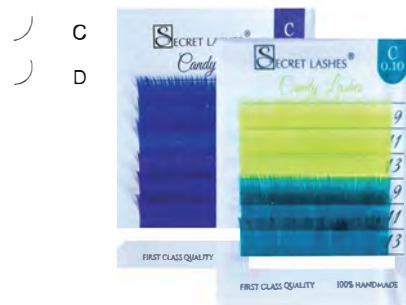
### Two ToneColor Eyelashes

- Silk-synthetic
- Ombre
- Profile: C, D
- Thickness: 0,07mm
- Package: tray,
- 6 lines in one tray: black-blue 9mm/11mm/13mm and black-purple 9mm/11mm/13mm



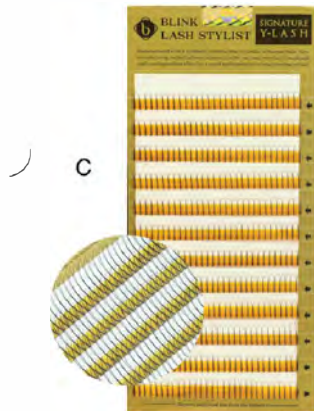
### Three ToneColor Eyelashes

- Silk-synthetic
- Multicolor lash(purple, pink, blue)
- Profile: C, D
- Thickness: 0,07mm
- Package: 6 lines,
- Mixed lengths: 10mm, 2x11mm, 2x12mm, 1x13 mm



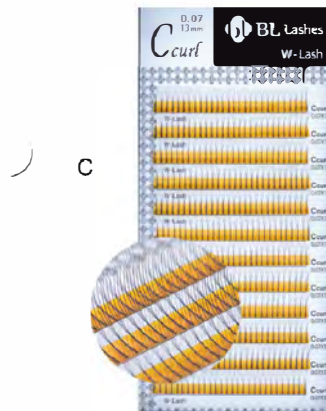
### Candy Eyelashes

- Candy is a mixture of juicy colors.
- You can choose between a mix of blue and violet or neon-yellow and turquoise eyelashes.
- Perfect as an addition to the 2: 1 or delicate 1: 1 method.
- The package contains 6 stripes.
- Profile: C, D
- Thickness: 0.10mm
- Lengths of each color. 9mm, 11mm, 13mm



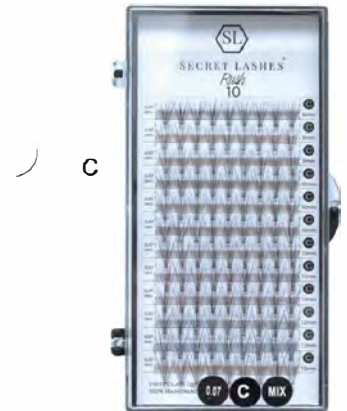
### Black eyelashes Y

- Silk and synthetic eyelashes
- Tufts composed of 2 eyelashes of one length, connected at the base
- Used in the 1:1 method to add volume to the styling or to fill in gaps
- Profile: C
- Thicknesses: 0,07/ 0,10/ 0,15
- Length: 7-15mm
- Mix: 7-14mm, 0,07; 0,10; 0,15
- Color: black, shiny, resilient
- Package: case, 12 stripes



### Black eyelashes W

- Silk and synthetic eyelashes
- Tufts composed of 3 eyelashes of one length, connected at the base
- Used in the 1:1 method to add volume to the styling or to fill in gaps
- Profile: C
- Thicknesses: 0,07/ 0,10/ 0,15
- Length: 8-14mm
- Mix: 7-14mm, 0,07; 0,10; 0,15
- Color: black, shiny, resilient
- Package: case, 12 stripes



### Rush Eyelashes

- Top quality eyelashes for make-up artists
- Different variants - 10D, 10D Two Tone, 20D
- Profile: C
- Thicknesses: 0,07mm and 0,10mm
- Lengths: 8mm, 10mm, 12mm, 14mm
- Package: case, 12 stripes
- To use on the skin, using glue for strips lashes (not included)



### SL GOLD GLUE

- For professionals
- Drying time 0,5-1 sec.
- Bonding time: 6-8 weeks
- Humidity between 45-60 %
- Works best in 20-23° C
- Color: black
- Capacity: 3g or 5g
- Fumes: medium perceptible



### SL ONYX GLUE

- For professionals
- Drying time 0,5-1 sec.
- Bonding time: 6-8 weeks
- Humidity between 40-55%
- It Works best in 19-23° C
- Color: black
- Capacity: 3g or 5g
- Fumes: low perceptible



### SL RUBY GLUE

- For professionals
- Drying time 0,5-1 sec.
- Bonding time: 6-8 weeks
- Humidity between 40-60 %
- It works best in 19-23° C
- Color: black
- Capacity: 3g or 5g
- Fumes: low perceptible



### SL SILVER GLUE

- Drying time 1,0-2 sec.
- Bonding time: 6-8 weeks
- Humidity between 45-65 %
- It works best in 20-24° C
- Color: black
- Capacity: 3g or 5g
- Fumes: medium perceptible



### SL MOON GLUE

- For professionals
- Drying time 0,5-1 sec.
- Bonding time: 6-8 weeks
- Humidity between 40-55%
- It works best in 20-23° C
- Color: transparent
- Capacity: 3g or 5g
- Fumes: low perceptible



### ULTRA X GLUE

- For professionals
- Drying time 0,5-1 sec.
- Bonding time: 6-8 weeks
- Humidity between 50-70 %
- It works best in 20-24° C
- Color: black
- Capacity: 5g and 10 g
- Fumes: high perceptible







## MACH GLUE

- Color: black
- Volume: 6ml
- Dryingtime: upto 2sec
- Fumes: Midto low



## GLAM GLUE

- Color: black
- Volume: 5ml
- Dryingtime: upto 1sec
- Fumes: Midto low



## ULTRA PLUS GLUE

- Dryingtime: 1,5- 2,5 sec.
- Bonding time: 6-8 weeks
- Humidity between 40-60 %
- It works best in 21-25° C
- Color: black
- Capacity: Sg and 10 g
- Fumes: light perceptible



## DIU GLUE

- Drying time: from 1.0 - 2.0 seconds
- Lasting: up from 6 to 8 weeks
- It works best in: 20°c - 24°c
- Optimal humidity: 45-65%.
- Color: black
- Capacity: 10g, Sg
- Vapours: perceptible



## ADVANCED GLUE

- Hypoallergenic (exception - allergic to acrylic)
- Dryingtime 5-7sec.
- Bonding time: 2-3 weeks
- Humidity between 40-45%
- It works best in 21-24 °C
- Color: black
- Capacity: Sg and 10 g
- Fumes: imperceptible
- It allows you to work on the open eye



**Tweezer Inka**

- Type: I
- Weight: 17g
- Length: 140mm



**Tweezer Fiona**

- Type: F
- Weight: 14g
- Length: 116mm



**Tweezer Sofia**

- Type: FS
- Weight: 13,5g
- Length: 116mm



**Tweezer Lisa**

- Type: IL
- Weight: 13,2g
- Length: 132mm



**Tweezer SL Raven**

- Type: FS
- Weight: 12,09g
- Length: 122mm
- Material: stainless steel



**Tweezer SL Lava**

- Type: L
- Weight: 12,33g
- Length: 114mm
- Material: stainless steel



## TWEEZERS



Tweezers Tesla

- Type TL
- Weight: 13g
- Length: 114mm



Tweezers SL-04

- Type FL
- Weight: 13g
- Length: 120mm



Tweezers Storm

- Type L
- Weight: 13g
- Length: 115mm



Tweezers Luna

- Type L
- Weight: 12,33g
- Length: 114mm



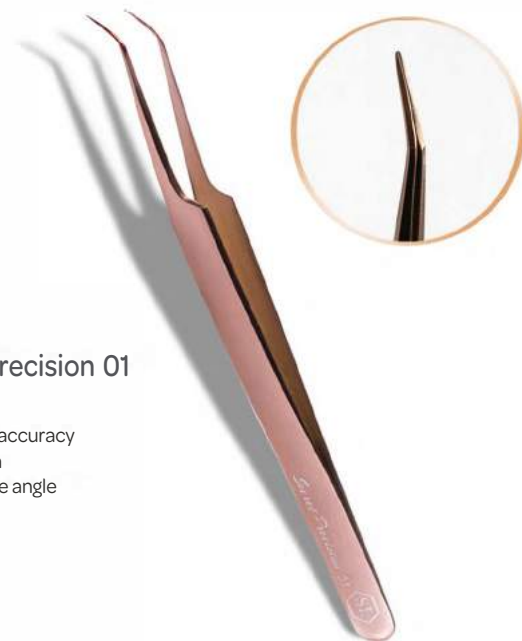
### Secret Precision 02

- Tweezer dedicated for short lashes (from 4mm)
- Extreme accuracy
- Precision



### Secret Precision 01

- Maximal accuracy
- Precision
- 45 degree angle





Tweezer Volume L

- Type: L
- Weight: 17g
- Length: 114mm



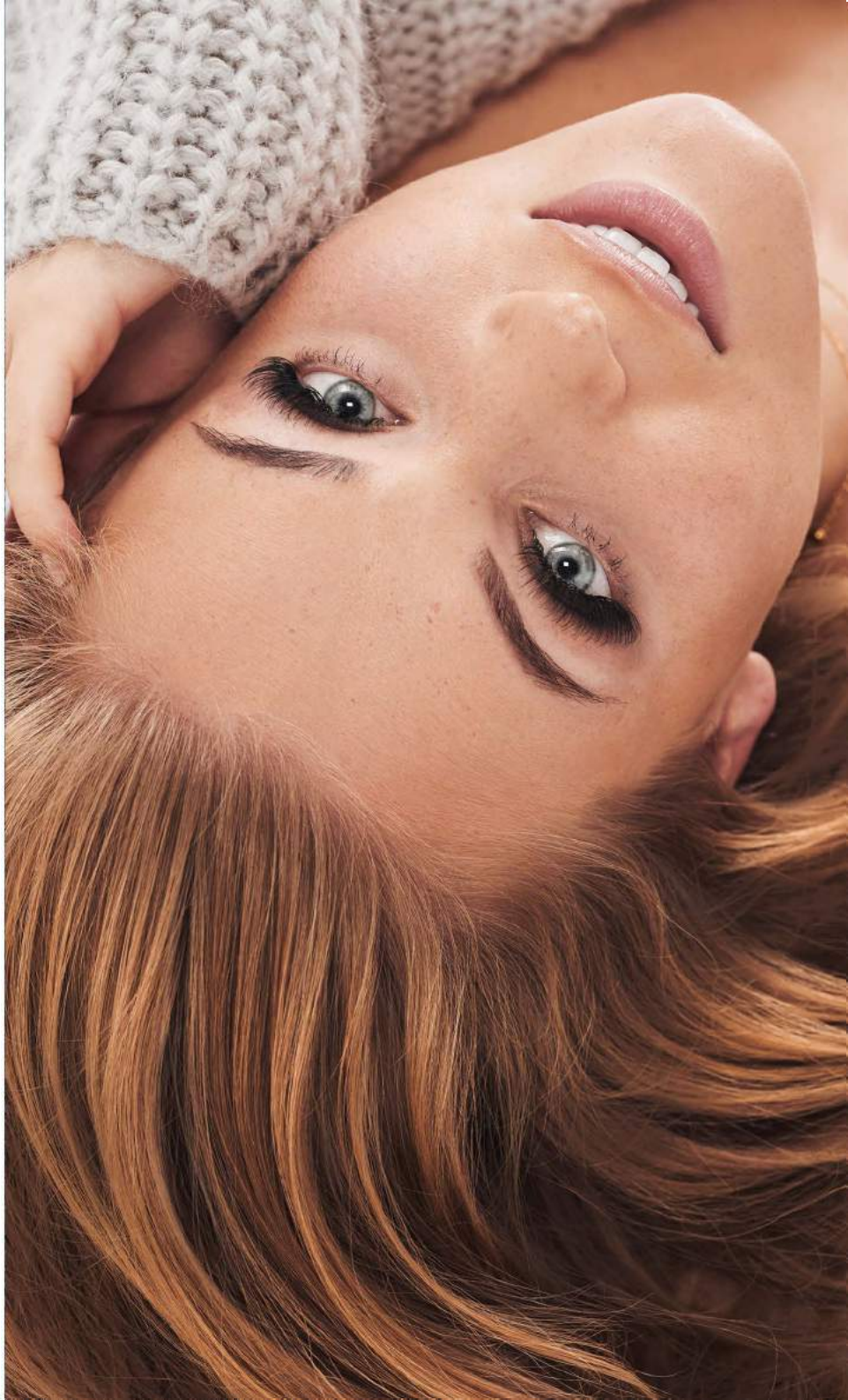
Tweezer GOLD SL-03

- Type: L+ case
- Weight: 16g
- Length: 128mm



Tweezer GOLD SL-01

- Type: S+ case
- Weight: 16g
- Length: 127mm







### Tweezer SL Max Volume

- Type: S
- Weight: 17g
- Length: 115mm



### Tweezer GOLD SL-02

- Type: TS +case
- Weight: 16g
- Length: 127mm



### Tweezer SL Scarlet

- Type: TS
- Weight: 16g
- Length: 128mm



### Tweezer SL Lucy

- Type: TL
- Weight: 15g
- Length: 113 mm



### Tweezer SL GOLD

- Type: I
- Weight: 16g
- Length: 125mm



### Tweezer SL GOLD type S

- Type: S
- Weight: 15g
- Length: 113mm





Tweezer - type I

- Weight: 16g
- Length: 133mm



Tweezer - type F

- Weight: 14g
- Length: 116mm



Tweezer - type S

- Weight: 14g
- Length: 117mm



Tweezer Vetus 2-SA

- Type: T
- Weight: 16g
- Length: 125mm



Tweezer Vetus 5A

- Type: F
- Weight: 14g
- Length: 115mm



Tweezer Vetus 5B-SA

- Type: FS
- Weight: 13,6g
- Length: 115mm



Tweezer Vetus 6A-SA

- Type: L
- Weight: 16g
- Length: 125mm



Tweezer type X

- Type: X
- Weight: 13g
- Length: 125mm



Tweezer Vetus 1S-A

- Type: I
- Weight: 14g
- Length: 120mm





**Tweezer Vetus ST-12**

- Type: I
- Weight: 17g
- Length: 132mm



**Tweezer Vetus ST-14**

- Type: T
- Weight: 14g
- Length: 110 mm



**Tweezer RV - Curve**

- Weight 13g
- Length: 115mm



**Tweezer Set SL (T+S)**

- Type: T + S
- Weight: 13,8g
- Length: 114mm



**Tweezer Vetus ST-11**

- Type: I
- Weight: 14g
- Length: 140mm



**Tweezer Vetus SS-SA**

- Type: I
- Weight: 13g
- Length: 138mm



Tweezer Vetus ST-15

- Type: S
- Weight: 16g
- Length: 117mm



Tweezer RV-1

- Weight: 3g
- Length: 112mm



Tweezer Vetus ST-17

- Type: FS
- Weight: 13g
- Length: 115mm



Tweezer Vetus SS-SA

- Type: I
- Weight: 3g
- Length: 138mm







**SL Volume Royal**

- Type: L
- Weight: 17.9g
- Length: 112mm



**Eyelash Applicator NoAngel**

- Type: L
- Weight: 17.9g
- Length: 112mm



**Big Box Tweezer Case**

- Tray for 12 tweezers
- Color: black
- Signed with white logo of Secret Lashes
- Zippered
- Elegant and practical
- Made of material similar to leather



**SL White Box Tweezer Set**

- Tweezer type T - length 115mm
- Tweezer type S - length 111mm
- Tweezer type L - length 113mm
- The case has 3 hooks for non-magnetic tweezers and 3 places for magnetic tweezers



**SL Black Box Tweezer Set**

- Tweezer type T - length 115mm
- Tweezer type S - length 111mm
- Tweezer type L - length 113mm
- The case has 3 hooks for non-magnetic tweezers and 3 places for magnetic tweezers



**Silver case for tweezers**

- Silver case for tweezers
- The case has 3 places for tweezers
- Made of soft material, lockable with a snap lock.
- Internal dimensions: 145mm x 72mm



## Perforated Tape

- Transparent, doesn't absorb moisture
- Doesn't leave traces of glue on the skin
- Size: 1,25cm x 9,14m



## Surgical tapes

- Made of soft, anti-allergic material, which doesn't cause eyes allergy during application of bottom lashes, sustaining drooping eyelid
- Sizes: 1,25cm/ 5m and 2,5cm/ 5m



## Silicone tape

- Silicone tape, antiallergic
- Width: 1,9cm, length: 60cm
- To separate the lower eyelashes and to cover the falling eyelids
- Delicate when peeling off



## Microfoam tapes

- Made by soft, elastic foam
- It adapts perfectly to the shape and movement of the body
- It is used for separation of bottom lashes
- Variants:
  - narrow: 2,5cm x 3m
  - wide: 5cm x 5cm





## Blink - colleague eyepatches

- Colleague anti-wrinkle anti-wrinkle eye flakes
- Adhesive
- Completely non-fatty and non-fibrous
- Under the influence of body temperature, nutrients and moisturizing substances are slowly released from the inside of the flake
- They are used to separate the lower and upper lashes
- Sold as a pair or as a set of 5 pairs (cardboard box)
- Manufacturer - Blink Lashes



## Eyepatches Sky/Lilla/Lime/Lime

- Thin, gel-coloured, self-adhesive eyepatches
- Perfectly profiled
- 3 types to choose from: Sky 5.5cm x 3cm / Lilla 7.6cm x 2.9cm / Lime 6.8cm x 3cm
- Soothe and moisturize the eye area, leaving a beautiful skin
- The composition: Water, Glycol, Aloe Extract, Vitamin C
- Type: Sky, Lilla, Lime



## Gel Eyepatches SL

- Anti-wrinkle, gel-coloured eyepatches
- Smoothing effect, reduction of eye shadows
- Adhesive
- They are used to separate the lower and upper lashes
- The surface contains delicate fibres (to be taped with tape)
- The package contains 6 pairs of eyepatches



## Be perfect - training eyelashes

- 5 pairs of training eyelashes on the straps
- Ideal for use on a mannequin's head
- Have a fine adhesive layer on the strap
- Help both beginner and advanced eyelash extension training



## Brushes with crystals

- Professional brushes for combing already extended eyelashes
- Product targeted at beauty salons, free of charge for the customer or for personal use
- Pink brushes
- Silver brushes
- Black brushes



## Brushes

- Professional brushes for combing already extended eyelashes
- Product targeted at beauty salons, free of charge for the customer or for personal use
- Blue brushes (10pcs.)
- Purple brushes (10pcs.)
- Black brushes (10 pcs.)
- Bent brushes (10 pcs.)
- Silicone brushes (10pcs.)
- Light pink brushes (10pcs.)
- Christmas tree brushes (10pcs.) - colors





### SL Gel Remover

- For removing the synthetic eyelashes and for cleaning tools
- Capacity: 20g
- Consistency: gel
- Reaction time: 5 - 15 min



### SL Premium Remover

- For removing the synthetic eyelashes and for cleaning tools
- Hypoallergenic
- Capacity: 10g
- Consistency: liquid
- Reaction time: 5-10 min



### SL Liquid Remover

- For removing the synthetic eyelashes and for cleaning tools
- Only for professionals
- Capacity: 10g
- Consistency: liquid
- Reaction time: 5-10 min



### SL Cream Remover

- For removing the synthetic eyelashes and for cleaning tools
- Capacity: 15g
- Consistency: cream
- Reaction time: 10-15 min





### Liquid Remover

- For removing the synthetic eyelashes and for cleaning tools
- Only for professionals
- Capacity: 10 ml
- Consistency: liquid
- Reaction time: 5 - 10 min
- Producer: Blink Lashes



### Remover Premium Clear

- For removing the synthetic eyelashes and for cleaning tools
- HYPOALLERGENIC
- Delicate for an eye
- Capacity: 10ml
- Consistency: liquid
- Reaction time: 5-10min
- Producer: Blink Lashes



### RemoverGel

- For removing the synthetic eyelashes and for cleaning tools
- Capacity: 15ml
- Consistency: gel
- Reaction time: 10 - 15 min
- Producer: Blink Lashes



### Cream Remover Plus +

- For removing the synthetic eyelashes and for cleaning tools
- Capacity: 30g
- Consistency: cream
- Reaction time: 15 min
- Producer: Blink Lashes







### Glue Film

- Foil protective coating for glue drops
- Protects the nephrite stone and the crystal base from damage
- 30 pieces in set
- Diameter 50mm



### Mapping sticker

- 7 pairs of stickers for mapping, which means mapping the size of eyelashes when creating a hairstyle
- They're glued on the petals under the eyes
- Will facilitate the work of any stylist



### SL Crystal

- Saucer for dropping glue with a diameter of 50mm
- Striking and elegant
- A well-balanced weight to hold the stand in place
- Made of glass
- Saucer for dropping glue with a diameter of 50mm



### Crystal saucer

- Saucer for dropping glue with a diameter of 50mm
- Made of glass



### Double foam tip swabs

- Perfect for applying primer or remover
- Two-sided, foam tips
- Length: 8cm
- Swab diameter: 5mm
- Quantity in set: 50 pcs.
- Package: jar



### Micro swab

- Perfect for applying primer, cleaner or remover
- Material can keep a fluids without absorbing them
- Used for eyelashes purification, to remove excess glue and makeup residue
- 100 pcs, 3 sizes: 1,0mm white / 1,5mm black / 2,0mm blue



### Flocked tip swabs

- Perfect for applying primer, cleaner or remover
- Tip thickness: 4,4mm
- High quality
- 50 pcs. in tayer





### SL Mirror

- They allow you to check the status
- of application without touching client's eye
- Make the application process more hygienic and professional



### SL Mirror

- They allow you to check the status of application without touching client's eye
- Make the application process more hygienic and professional
- Available in two versions: silver, rainbow
- Length: 17cm



### Two-sided mirror

- Elegant, two-sided mirror
- One side 1:1, second side magnifying
- The size of the mirror with the handle: 19cm
- Mirror size: 10cm/ 8cm



### SL Brush

- Eyelash Cleansing Brush
- Ideal for washing eyelashes extended with shampoo
- Soft bristles in a gentle way will allow you to sweep away all impurities
- It is used to prepare the eyelashes before the application and for cleaning the eyelashes after the application
- Color: white
- Length: 11.5cm (including 10mm bristle length)
- Bristle diameter: 10mm





### Memory foam ergonomic lash pillow

- Ergonomically designed to provide maximum comfort to the neck, back and shoulders during your lash procedure
- Size: 60 x 29 x 12 (cm)
- Material: interior 100% polyester, pillowcase 80% cotton, 20% polyester
- Non-allergenic, breathable
- White color
- Weight: 1050g
- Angle of 45°



### SL Pillowcase

- Cushion spare for SL ergonomic lash pillow
- Material: 80% cotton, 20% polyester
- Colors: white, grey, black
- Washable
- Secret Lashes logo



### SL Blanket

- Soft and comfortable blanket with an embroidered Secret Lashes logo
- Made from 100% polyester fleece, anti-pill
- Size: 170cm / 130cm
- Weight: 220g / m2
- Two shades to choose from
- The perfect addition for a professional stylist



### SL Roll Disposable Bed Sheets

- Paper sheet used to protect beauty bed and keeps your table clean and hygienic
- Width: 60cm
- Length: 50m
- Perforation enabling tearing off the leaves every 50cm
- Basis weight: 40g/ m2
- Material: tissue + non-woven fabric
- Signed with the Secret Lashes logo





### Lash Holder SL

- Stand for sticking straps with eyelashes, thanks to the appropriate weight does not move during the treatment
- Made from plexi
- Transparent
- Sizes:
- Small: 60x110x8mm, 5 stripes
- Big: 75x150x8mm, 10 stripes with numbers
- from 7 to 16



### Silicone washer on the forehead

- Enables comfortable work by placing straps with eyelashes on the washer
- Size: 11cm x 5,5cm x 0,5cm
- Transparent



### Secret Holder

- Stand for sticking straps with eyelashes
- Made from plexi
- Stamped with the Secret Lashes logo
- Size: 20cm x 11,3cm
- Color: white
- Can be used as a complement in Secret Box Strip



### Silicone base

- For bulk eyelashes
- Helps to make eyelashes easier to grasp
- Placed in a practical container with a lid
- Size: diameter 8 cm



### Foam pad

- Perfect for bulk lashes
- The stand does not require wetting
- Eyelashes can be easily grasped with tweezers
- Size: 120mm x 79mm x 10mm



### Silicone pad

- Manufactured from the highest quality material
- Allows you to grab eyelashes quickly and very securely
- Helpful in working with both portioned lashes and strap lashes
- Size: 65mm x 53mm



**Eyelash container**

- Container for storing portioned eyelashes
- Diameter: 70mm



**Mannequin head**

- It is made from high quality plastic
- Perfect for practicing of eyelash extension
- Should be used together with eyelashes on the strap Be Perfect



**SL Selfie Ring**

- Brand New LED Video Light made of high quality plastic
- High bright filling light creates perfect shooting
- Three levels brightness adjustment gradually apply to more scenes
- Lightweight and portable, easy to install by one clip
- Signed with the Secret Lashes logo
- Powered by: USB Charging
- Size: 80mm x 80mm x 30mm



**Air Blower**

- It is made of non-allergenic rubber
- Color: blue, pink



## Make-up remover pads

- Non-greasy pads for eye and eyelash make-up removal
- Soaked in aloe vera extract, so they do not irritate the skin
- in the package there is an applicator for convenient collection of flakes
- 50 pieces per package



## SL Lash Spray

- USB device, supplemented with deionized water, which forms water mist of nano-particles
- Soothes, helps people with tendency to allergy
- Accelerates the setting and hardening of glue
- Refreshes and moisturizes client face
- Kit contents: USB device, bottle with dispenser
- The USB charging cable



## SL Pillow

- 4 models to choose from
- Beautiful colloquiality
- The perfect decoration for the beauty studio or living room
- Dimensions 40cm x 40cm x 40cm
- Solid filling



## Protective mask 3M

- Fumes and air pollutants filtering mask, protecting the respiratory tract - ideal solution for people sensitive to glue fumes
- Adapts to the shape of the face
- Adapts to face movements while talking
- Use up to 8 hours of work (Example - if we work 3 hours, we hide the mask in the bag and can use it again, for 5 more hours of work)
- Professional, comfortable mask for stylist
- Helps maintain hygiene during application



## SL Speed Up

- Accelerator drying glue
- It accelerates the binding and drying of glue
- It forms a protective coating, which makes the lashes are better to arrange
- Apply for synthetic lashes before application, allow to dry
- Liquid consistency
- Rose scent
- Capacity: 15g



## SL Cleaner 15ml

- Is used for degreasing and cleansing natural eyelashes before lengthening and thickening the eyelashes
- Very economical
- The preparation is in a convenient bottle with a pump and a dispenser
- Make the eyelash extension lashes long lasting, not easy to fall off
- Capacity: 15ml
- Production: Poland





### SL Primer 50ml

- Liquid increasing the adhesion of synthetic eyelashes to natural eyelashes
- Eliminates the formation of glue lumps during the procedure
- The product is very efficient and allows to keep eyelashes clean and extends the durability of application
- Is located in a convenient bottle with a pump and dispenser
- Capacity: 50ml



### SL Shampoo 100ml

- Eyelash Shampoo
- Is used for cleaning extended eyelashes
- Does not contain any oily substances, so it does not affect the durability of the adhesive bonding
- An ideal product for eyelash stylists and for people who have extended and thickened eyelashes to care for them at home
- Capacity: 100ml



### Lampa Glamcor Classic Elite 2

- LED lamp (150 diodes), double-armed, adjustable, portable
- Mounted on a tripod
- Daylight quality 5,600k HD
- Voltage: 100-240V
- 5 levels of brightness: 20%, 40%, 60%, 80%, 100%
- Adjustable height
- Very light
- Working time: approximately 50 000 hours
- Guarantee: 1 year



### Lampa Glamcor Mono Light

- Lamp led type: Glamcor Mono Light
- LED lamp (150 diodes), single-armed
- Fixed e.g. to a bed or a table
- Daylight quality 5,600k HD
- Voltage: 100-240V
- 2 brightness levels, cold light
- Weighs less than 2 kg
- Guarantee: 1 year



### Lampa Glamcor Multimedia Extreme

- Lamp led type:
  - Glamcor Multimedia Extreme
- Daylighting: 5,600K HD
- It doesn't heat up
- Lightweight construction: 4.5lbs / 2.5kg
- Four lighting levels
- Selfie option via Bluetooth
- Has a USB Fast Charging Pod
- A product ideal for mobile professionals





### Next visit passes

- Elegant, 9cm x 5cm fold-out pass
- For increased durability, the card is covered with matt foil
- Made on paper 300g
- Space for 15 visits to be entered
- Pack of 50 pieces



### Client Card - 10 pc.

- The card enables to keep documentation related to applications executed for the client
- Contains a medical questionnaire
- Allows you to enter 11 visits with an option to describe the materials used and the application methods used
- 10 pc.



### Post-treatment leaflet - 50 pc.

- Information leaflets for clients how to take care of their eyelashes after the treatment
- 50 pcs. in set



### Roll-Up SL

- Roll-up with a beautiful Secret Lashes ambassador Joanna Krupa
- Ideal for use in the salon to promote eyelash styling
- Dimensions: height 200cm, width 85cm
- Roll-up kit + transport bag





### Zirconium case (medium size)

- Can be opened on one side
- Pull-out shelf
- Removable drawers
- Additional pockets



### Butterfly case (small)

- Pull-out shelf
- The inside of the case is lined with velour
- Aluminium housing - locks of the case are locked with a key
- Dimensions: 25cm x 15cm x 13cm





### Secret Box Tools

- Ideal for storing accessories for eyelash extensions
- Part of the box is equipped with a colourless lid
- Dimensions: 289mm x 215mm x 73mm
- Number of compartments - 8



### SecretBoxStrip - box with holder

- Box with holders for storing eyelashes
- Protects lashes against dust and external conditions
- The set includes 7 Secret Holders



### SecretLash Box - for eyelashes in cassettes

- Ideal packaging for eyelashes in cassettes
- Comfortable transparent cover
- Dimensions: 222mm x 118mm x 128mm x 128mm
- Number of compartments - 15

# #I'm Not An Angel

## No ANGEL!

No Angel - lashes on a strap

- A dozen or so of the most fashionable designs to choose from
- Best quality fibre
- Ideal, thin strap that makes lashes comfortable to wear
- Easy to apply
- Available in black or transparent stripes
- When properly maintained, they can be reused several times.
- Packed in elegant box



Glue No Angel

- For the eyelashes on the strip and the tufts
- Latest formula
- Free of latex
- In black and white (which changes into an invisible one after the eyelashes have been put on)
- Capacity: 5g
- Bottle with brush for easy application





## Lash Essence

- An eyelash nourishing and cleansing product
- The preparation does not contain any oily substances in its composition
- A specially designed brush allows you to reach the spaces between the lashes
- For use on prolonged and natural eyelashes
- Capacity: 15ml



## Eyelash Conditioner - MD

- High concentration of active ingredients and serum stimulating eyelash growth
- Supports the growth and quality of natural eyelashes, the eyelashes become longer and thicker
- Delicate applicator in the form of a thin brush
- Capacity 5,6ml
- For use on natural eyelashes



## Mascara

- For extension eyelashes
- Fat-free formula
- Does not weigh down eyelashes, does not affect the adhesive bonding
- Contains volumetric polymers
- Extract of keratin and vitamin E
- Nourishes natural eyelashes
- Color: black
- Capacity: 8ml



Starry Night

Rich Black

Caramel Brown

## Eye crayon - Blink Liner

- Ideal for extended eyelashes
- Resistant to external factors such as sweat and tears
- Soft, does not smudge or crumble
- Available in the following colors: black, brown
- Weight: 1.6 g



## Eyelash fixer

- Fat-free formula
- Strengthens the glue bond
- Removes grease and dirt from eyelashes
- Lengthens the holding time of extended eyelashes
- Capacity: 7ml
- Color: colorless and black



## Eyelash make-up remover

- Fat-free formula, especially for extended eyelashes
- Does not affect the bonding of the adhesive
- Contains herbal extract for soothing irritations
- Perfectly removes make-up
- A bottle with a dispenser
- Capacity: 100ml





## Secret Eyebrows Glue

- Ideal adhesive for hair application in reconstruction and eyebrow correction methods
- Drying time: depending on hair type, skin and external factors
- Can also be used for eyelash extensions, e.g. for colored eyelashes
- It lasts for about 2 weeks.
- Color: colourless
- Capacity: 5ml
- Vapours: almost undetectable
- Clear

# Lash Lifting

## *New formula!*



### Perm Lotion 1

A lotion that allows for increased laxity between disulphide bonds of eyelashes and eyebrows. Because of that we are able to slightly change the natural placement of the lash/brow hair and amend its position. Indispensable for eyelash and eyebrows' lifting and lamination.

The product allows for 45-60 applications depending on the thickness of the eyelashes/eyebrows.

Volume: 5ml



### Setting lotion 2

A lotion that neutralizes the Perm Lotion. Used to firm up the newly acquired shape of the eyelash or eyebrow, achieving the effect of curled eyelashes and combed eyebrows. Indispensable for eyelash and eyebrows' lifting and lamination.

The product allows for 45-60 applications depending on the thickness of the eyelashes/eyebrows.

Volume: 5ml



### Nourishing Lotion 3

A lotion used in finishing the Lash Lifting and Brow Lifting procedures. It ensures attractive shine and protection from the external elements, which is very important after eyelash/eyebrows' applications.

The product allows for 45-60 applications depending on the thickness of the eyelashes/eyebrows.

Volume: 5ml



### SL CLEAR GLUE

A glue used in lash lifting application, water soluble, fumeless, not causing eye irritation.

Capacity: 5ml



### Intense BOTOX Hypoallergenic - Eyelash lifting

An eyelash/ eyebrows conditioning solution used in eyelash and eyebrow lifting and lamination treatments. Used both in treatments and daily care of eyebrows and eyelashes.

Capacity: 15ml



### Intense BOTOX - Eyelash lifting

An eyelash/ eyebrows conditioning solution used in eyelash and eyebrow lifting and lamination treatments. Used both in treatments and daily care of eyebrows and eyelashes.

Capacity: 15ml

# CONTACT

SECRET LASHES

ul. Al Zwycięstwa 173 (I piętro)

81-521 Gdynia

Fenix Office Park